

# PUSHBUTTONS NON-ILLUMINATED 15.2 mm, 250 V / 0.7 A

## Technical Data

### → General information

Form of lens	protruding lens
Color of lens	see order block
Form of collar	round

### → Dimensions

Diameter of collar	19 mm
Overall height	8.2 mm
Mounting depth	21.5 mm
Mounting hole	15.2 mm

### → Mechanical design

Mounting	ring nut
Terminals	see order block
Contact system	bridge contact
Contact function	momentary
Contact arrangement	see order block
Contact materials	Ag
Illumination	no
Lamp socket	no

### → Mechanical characteristics

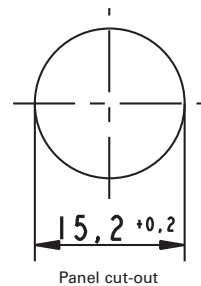
Operating force max.	7.5 N
Operating travel	3 mm
Switching travel NC	1.2 mm
Switching travel NO	2.0 mm
Robustness max.	100 N

### → Electrical characteristics

Rated voltage AC max.	250 V
Rated current max.	0.7 A
Contact resistance when new max.	50 mΩ
Contact resistance acc. to life max.	300 mΩ

### → Other specifications

Operating life (operations)	25,000
Degree of protection from front side	IP40 acc. to DIN EN 60529 (IP65 with sealing cap)
Operation temperature min.	-25 °C
Ambient temp. operating max.	+85 °C
Storage temperature min.	-40 °C
Storage temperature max.	+90 °C
Environmental resistance	acc. to IEC 60068-2-14, -30, -33 and -78
Weight	7 g
Flame class acc. to UL 94	V 0
Hot wire ignition acc. to IEC 60695-2-1	yes
ROHS compliant	yes
REACH compliant	yes



Panel cut-out

## Approvals



ENEC 25T85

# PUSHBUTTONS

PUSHBUTTONS NON-ILLUMINATED - MOUNTING HOLE DIAMETER 15.2 MM

1

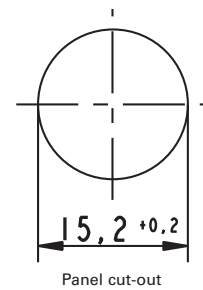
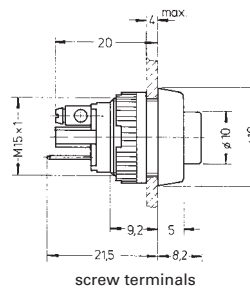
## Accessories Pushbutton non-illuminated - 15.2 mm, 250 V / 0.7 A

→ Description	Photo	Order no.	Additional accessories see page
Sealing cap, transparent, for protection acc. to IP65		5.52.008.115/0000	-
Fixing spanner M 15, M 16		5.58.002.019/0105	5 - 25



## Pushbutton non-illuminated mounting hole diameter 15.2 mm

Technical data see page 1 - 79



Other Pushb.

→ Contact arrangement	Contact function	Color of lens	Terminals	Order no.
1 NO	momentary	opaque red	screw terminals	1.10.001.001/0301
1 NO	momentary	opaque red	solder/quick connector 6.3x0.8 / 2x 2.8x0.8mm	1.10.001.011/0301
1 NO	momentary	opaque green	screw terminals	1.10.001.001/0507
1 NO	momentary	opaque green	solder/quick connector 6.3x0.8 / 2x 2.8x0.8mm	1.10.001.011/0507
1 NO	momentary	opaque white	screw terminals	1.10.001.001/0205
1 NO	momentary	opaque white	solder/quick connector 6.3x0.8 / 2x 2.8x0.8mm	1.10.001.011/0205
1 NO	momentary	opaque black	screw terminals	1.10.001.001/0104
1 NO	momentary	opaque black	solder/quick connector 6.3x0.8 / 2x 2.8x0.8mm	1.10.001.011/0104
1 NC	momentary	opaque red	screw terminals	1.10.001.151/0301
1 NC	momentary	opaque red	solder/quick connector 6.3x0.8 / 2x 2.8x0.8mm	1.10.001.161/0301
1 NC	momentary	opaque black	screw terminals	1.10.001.151/0104
1 NC	momentary	opaque black	solder/quick connector 6.3x0.8 / 2x 2.8x0.8mm	1.10.001.161/0104

Quick-connector 6.3 x 0.8 mm. The connector is splitted and also usable for two connectors 2.8 x 0.8 mm.